

Customer :

customer

Customer part :

customer part

Comment :

Comment

S1=0.03

S2=0.21

Tmax=468

Tp S2=507.0

PI=0.14

HI=40

Sample =8747.9

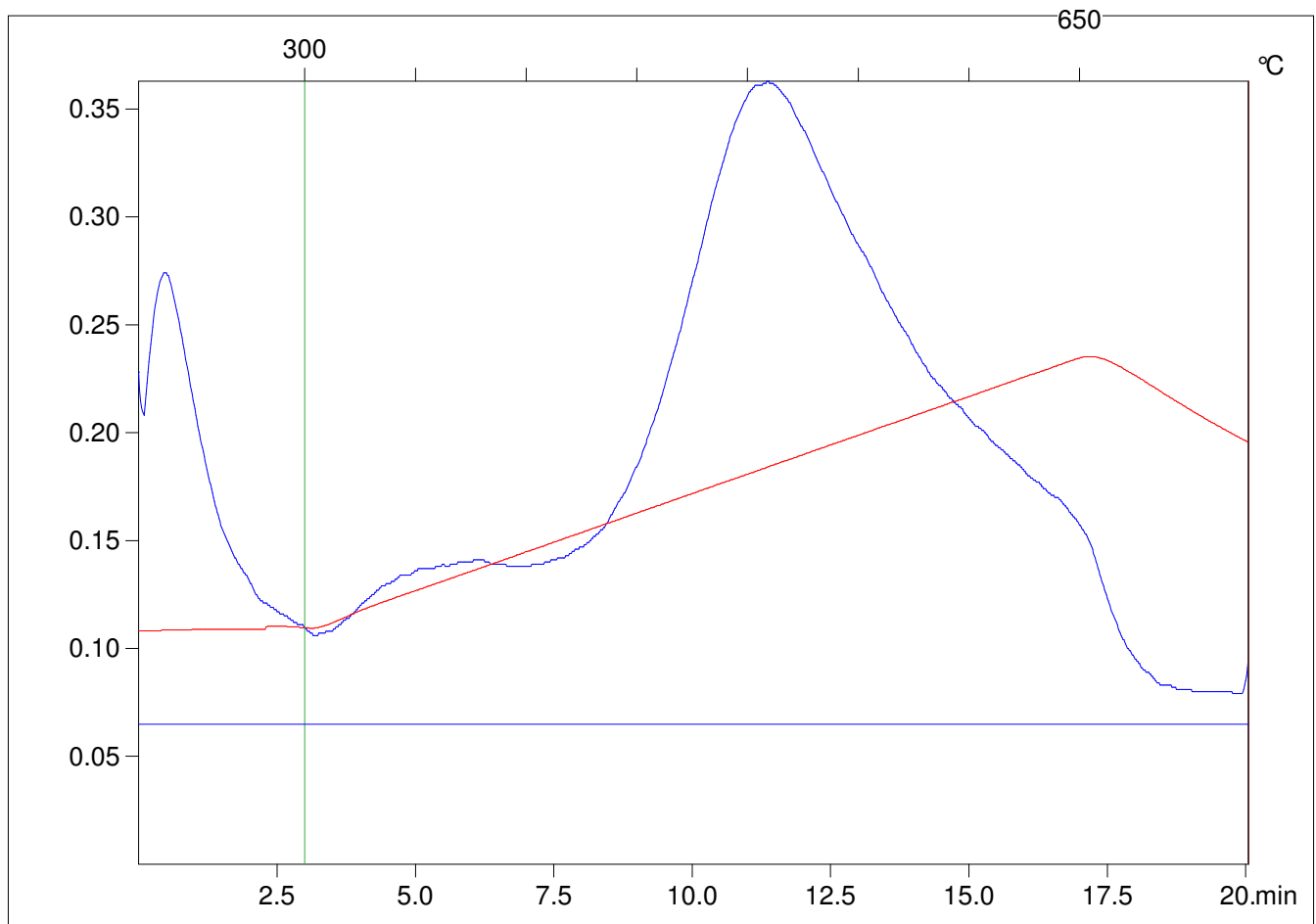
Method =Bulk Rock

Cycle=Basic

KFID(10*9)=1167

Qty =69.8

TOC=0.53



C:\VINC\PK141015\PK097.R00 : FID pyrolysis graphic

State

Pyro Status

Oxi Status